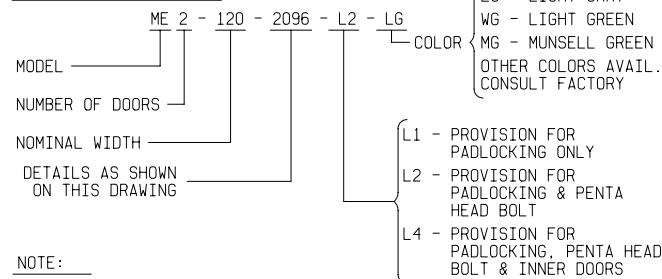


**PAD & DETAIL BOLT DETAIL**

ANCHOR BOLTS TO BE 5/8" DIA. & TO EXTEND 1-1/2" MINIMUM ABOVE PAD. PROVIDE UTILITY ENTRY AS REQUIRED.

**ORDERING INFORMATION:**



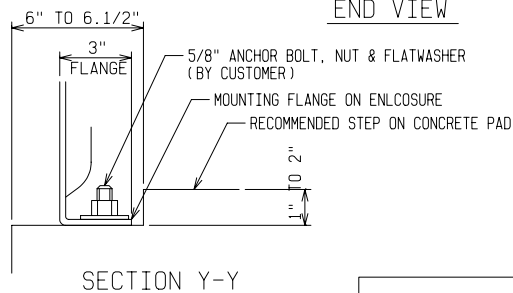
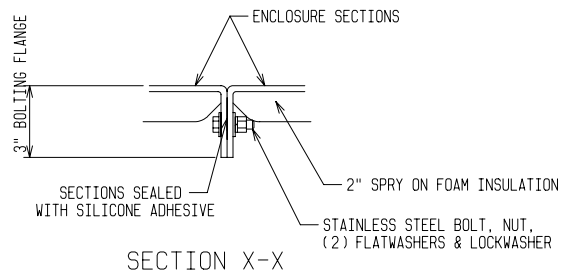
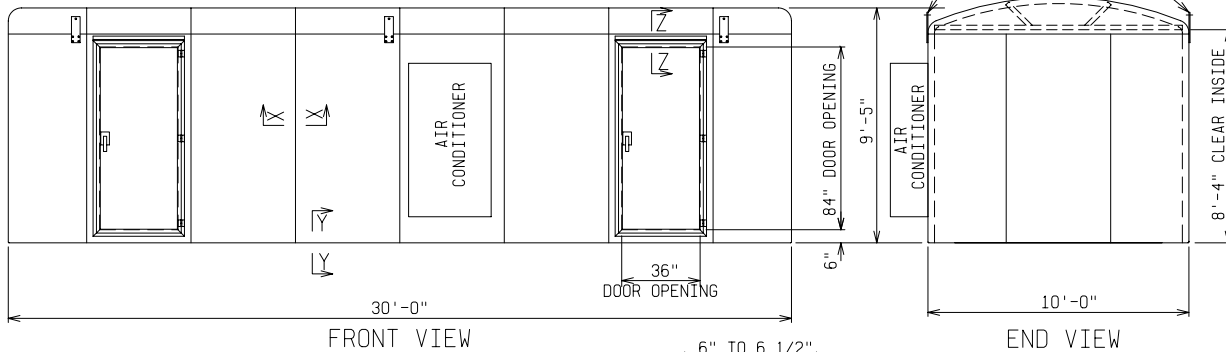
**NOTE:**

**1. MATERIAL:**

- 1) FIBERGLASS LAMINATE 1/4" NOMINAL THICKNESS
- 2) EXTERIOR UV STABILIZED GELCOAT - 14 MIL NOMINAL THICKNESS
- 3) FIRE RETARDANT - DOES NOT SUPPORT COMBUSTION
- 4) STAINLESS STEEL HARDWARE
- 5) WALLS INSULATED WITH 2" SPRAY ON FOAM

**2. STANDARDS:**

- 1) CERTIFIED TEST DATA OF ASTM STRUCTURAL STANDARDS AVAILABLE UPON REQUEST



<p>FIBERGLASS MODULAR ENCLOSURE</p> <p>10 FT WIDE x 9 FT 5 IN HIGH x 30 FT LONG</p> <p>TWO ACCESS DOORS    A/C, LIGHTS, RECEPTACLES    FOAM INSULATION</p>			
<p>ODELL, OREGON</p>			
DRAWN: BB	PAGE	DATE 10-4-05	DRAWING NO. 2096

FILE REF: