

PAD & DETAIL BOLT DETAIL

ANCHOR BOLTS TO BE 5/8" DIA. & TO EXTEND 1-1/2" MINIMUM ABOVE PAD.
 PROVIDE UTILITY ENTRY AS REQUIRED.

ORDERING INFORMATION:

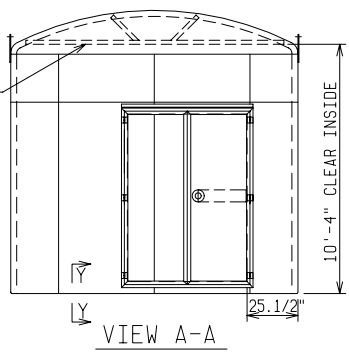
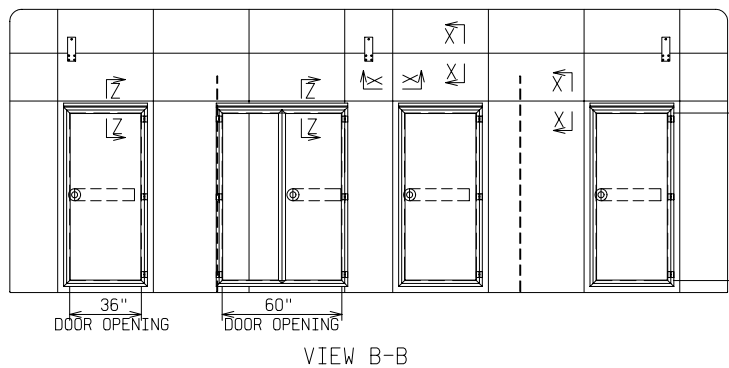
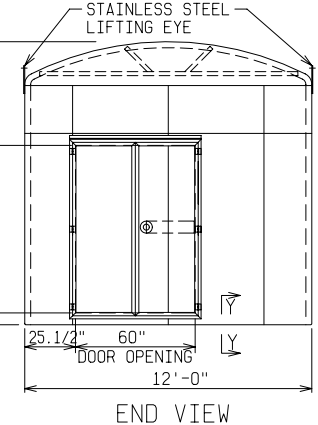
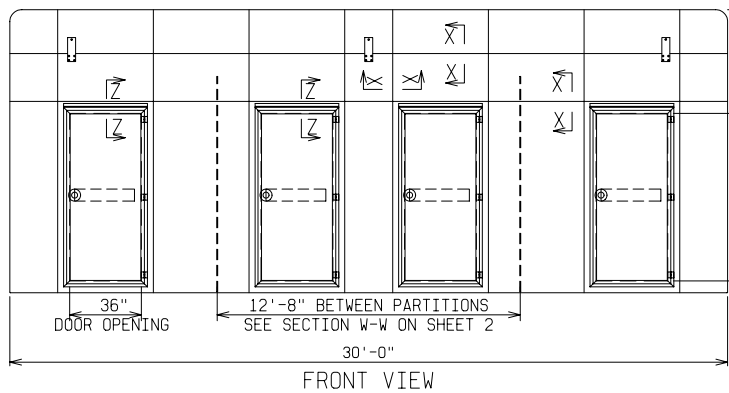
MODEL ME 12 - 144 - 2070 - L2 - W6
 NUMBER OF DOORS 12
 NOMINAL WIDTH 12'-0"
 DETAILS AS SHOWN ON THIS DRAWING

COLOR {
 WG - LIGHT GREEN
 MG - MUNSELL GREEN
 OTHER COLORS AVAIL. CONSULT FACTORY

L1 - PROVISION FOR PADLOCKING ONLY
 L2 - PROVISION FOR PADLOCKING & PENTA HEAD BOLT
 L4 - PROVISION FOR PADLOCKING, PENTA HEAD BOLT & INNER DOORS

NOTE:

- MATERIAL:**
 - FIBERGLASS LAMINATE 1/4" NOMINAL THICKNESS
 - EXTERIOR UV STABILIZED GELCOAT - 14 MIL NOMINAL THICKNESS
 - FIRE RETARDANT - DOES NOT SUPPORT COMBUSTION
 - STAINLESS STEEL HARDWARE
- STANDARDS:**
 - CERTIFIED TEST DATA OF ASTM STRUCTURAL STANDARDS AVAILABLE UPON REQUEST



FIBERGLASS MODULAR ENCLOSURE
 12 FT WIDE x 11 FT 10 IN HIGH x 36 FT LONG
 SEVEN ACCESS DOORS THREE DOUBLE DOORS PARTITIONS

POWER DESIGN INC.
 ODELL, OREGON

DRAWN: BB	PAGE 1 OF 3	DATE 3-7-05	DRAWING NO. 2070 -R1
--------------	----------------	----------------	-------------------------

FILE REF: