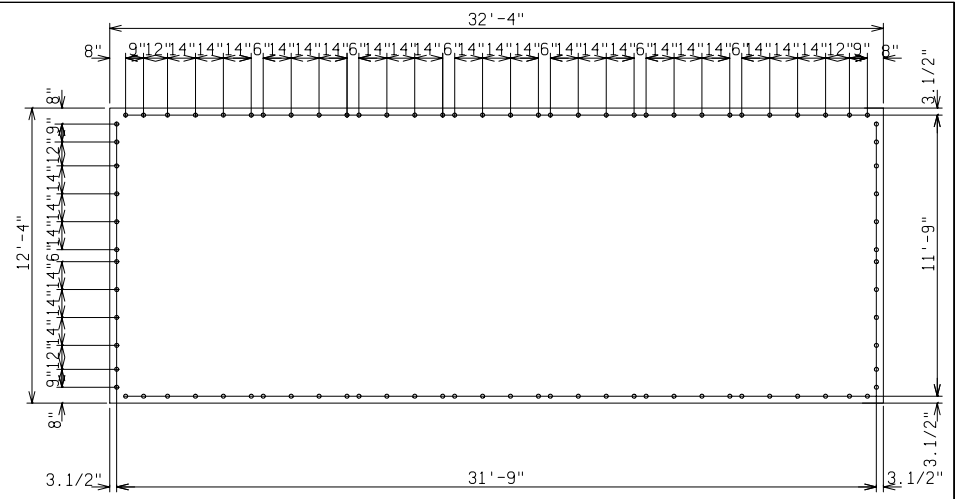


PLAN VIEW



PAD & DETAIL BOLT DETAIL

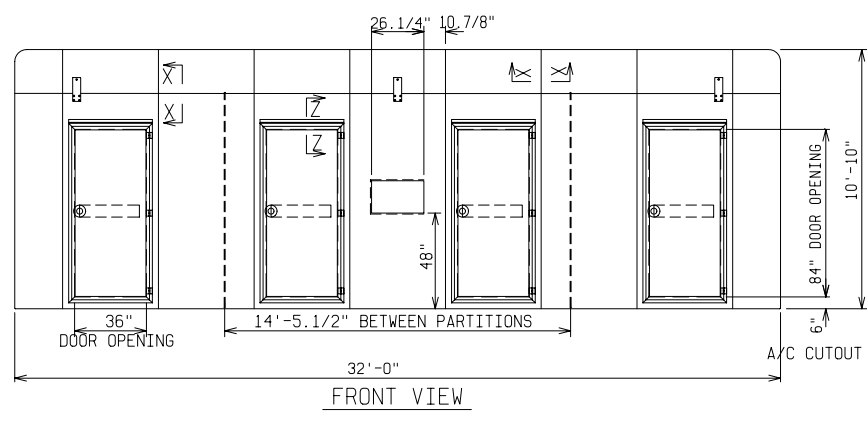
ANCHOR BOLTS TO BE 5/8" DIA. & TO EXTEND 1-1/2" MINIMUM ABOVE PAD.
PROVIDE UTILITY ENTRY AS REQUIRED.

ORDERING INFORMATION:

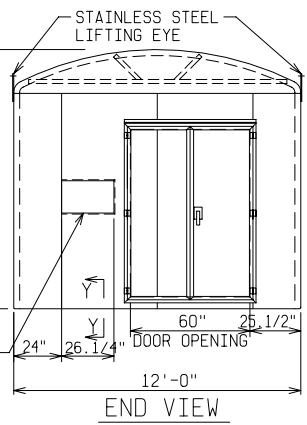
MODEL ME 13 - 144 - 2090 - L2 - W6
 NUMBER OF DOORS
 NOMINAL WIDTH
 DETAILS AS SHOWN ON THIS DRAWING
 COLOR
 L1 - PROVISION FOR PADLOCKING ONLY
 L2 - PROVISION FOR PADLOCKING & PENTA HEAD BOLT
 L4 - PROVISION FOR PADLOCKING, PENTA HEAD BOLT & INNER DOORS
 WG - LIGHT GREEN
 MG - MUNSSELL GREEN
 OTHER COLORS AVAIL. CONSULT FACTORY

NOTE:

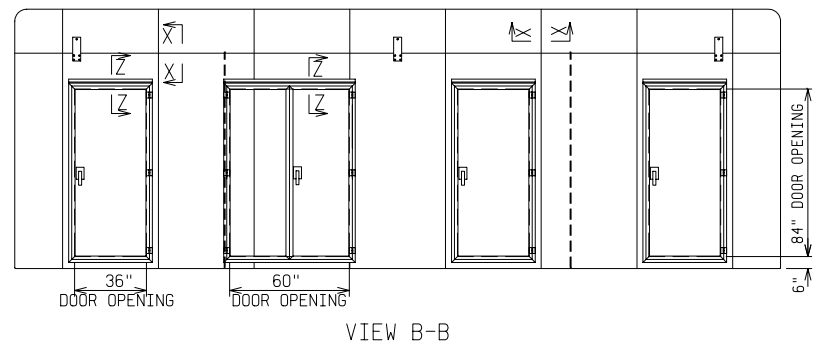
- MATERIAL:**
 - FIBERGLASS LAMINATE 1/4" NOMINAL THICKNESS
 - EXTERIOR UV STABILIZED GELCOAT - 14 MIL NOMINAL THICKNESS
 - FIRE RETARDANT - DOES NOT SUPPORT COMBUSTION
 - STAINLESS STEEL HARDWARE
- STANDARDS:**
 - CERTIFIED TEST DATA OF ASTM STRUCTURAL STANDARDS AVAILABLE UPON REQUEST



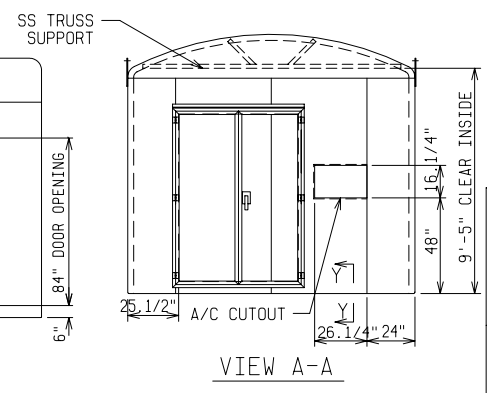
FRONT VIEW



END VIEW



VIEW B-B



VIEW A-A

FIBERGLASS MODULAR ENCLOSURE
 12 FT WIDE x 10 FT 10 IN HIGH x 32 FT LONG
 SEVEN ACCESS DOORS THREE DOUBLE DOORS PARTITIONS



DRAWN: BB	PAGE 1 OF 2	DATE 9-14-05	DRAWING NO. 2090
--------------	----------------	-----------------	---------------------

FILE REF: