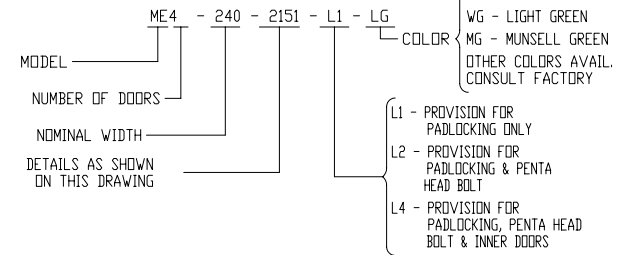
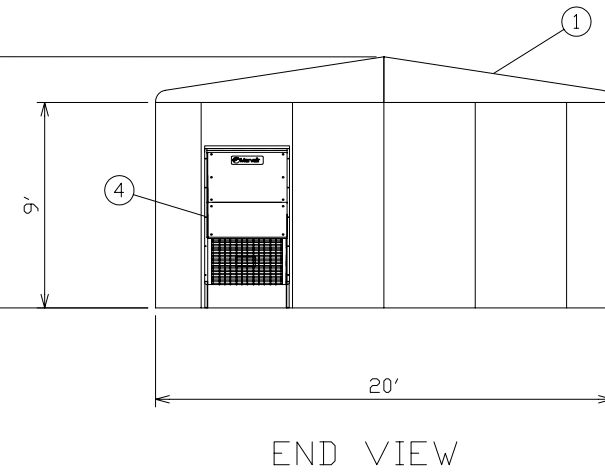
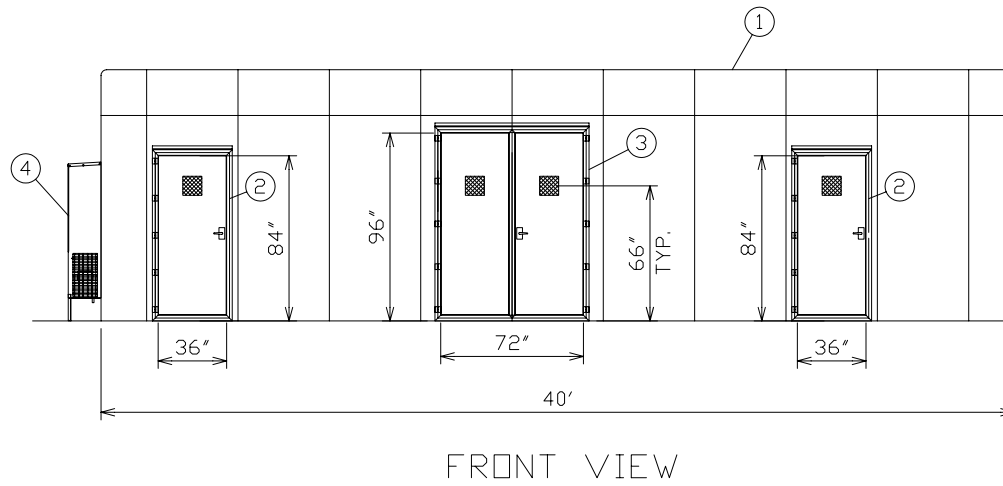


ORDERING INFORMATION:



NOTE:

1. MATERIAL:
 - 1) FIBERGLASS LAMINATE 1/4" NOMINAL THICKNESS
 - 2) EXTERIOR UV STABILIZED GELCOAT - 14 MIL NOMINAL THICKNESS
 - 3) FIRE RETARDANT - DOES NOT SUPPORT COMBUSTION
 - 4) STAINLESS STEEL HARDWARE
2. STANDARDS:
 - 1) CERTIFIED TEST DATA OF ASTM STRUCTURAL STANDARDS AVAILABLE UPON REQUEST
3. SEE JOB MATERIAL LIST FOR SPECIFIC ITEMS SUPPLIED



FIBERGLASS MODULAR ENCLOSURE
20 FT WIDE x 11 FT HIGH x 40 FT LONG
PAD MOUNT - AIR CONDITIONERS - LIGHTS - A/C PANELS

POWER DESIGN INC.
ODELL, OREGON

DRAWN: RB	PAGE 1 OF 5	DATE 10-20-06	DRAWING NO. 2151-R4
--------------	----------------	------------------	------------------------

FILE REF: